

FEBRUARY 2026



2025 Annual Report



the
PHOTO
DISTRICT



LETTER FROM THE BOARD OF DIRECTORS



As we reflect on 2025, we are incredibly grateful for the generosity, dedication, and unwavering support of our community. Because of you—our supporters, volunteers, partners, and staff—Paws Place Dog Rescue experienced a year of meaningful progress and resilience, setting the stage for a strong and hopeful future for the dogs in our care. 🐾

In 2025, Paws Place Dog Rescue continued to invest in both immediate needs and long-term sustainability. Throughout the year, we completed or began several key projects, including a new van wrap for our Pawsmobile to increase community visibility; mold remediation and interior painting of the kennel building; refreshed parking lot gravel; improvements to septic system drainage; and the installation of air quality control systems within our HVAC units to enhance the kennel environment. We also officially launched our multi-phase Sanctuary Shelter and Fire Safety Improvement Project, a major initiative designed to strengthen safety and support the future of our mission.

To support our growing programs, we expanded and strengthened our team in 2025. We brought on additional kennel cleaning staff, hired a new Adoption Coordinator to improve adopter engagement and placement success, and welcomed a new Development and Events Lead Coordinator to grow fundraising efforts and deepen community partnerships.

Innovation and efficiency remained central to our work. By continuing to utilize the expertise of our volunteer veterinarian, Dr. Evans, and expanding the responsibilities of our Vet Care Coordinator to include in-house fecal testing and blood draws for overnight lab results, we were able to save valuable time and financial resources while ensuring timely, high-quality medical care for our dogs.

Thanks to the dedication of our staff, volunteers, and supporters, Paws Place spayed and neutered 51 dogs, treated 7 dogs for heartworm disease, rescued 93 dogs from county shelters and owner surrenders, and found loving forever homes for 88 dogs in 2025—each placement representing a life changed for the better.

The year was not without its challenges. In 2025, we faced a mini pandemic within our kennel when an outbreak of kennel cough required us to temporarily shut down operations for more than a month. Through swift action, strict health protocols, and close collaboration among staff, volunteers, and veterinary partners, we successfully contained the outbreak, safeguarded the health of our dogs, and reopened stronger, wiser, and better prepared for the future.

Looking ahead to 2026, Paws Place Dog Rescue remains focused on protecting the dogs in our care through thoughtful planning and responsible investment. Caring for abandoned and vulnerable dogs remains at the heart of everything we do. To protect them, we are making thoughtful improvements to our facilities that enhance safety during major storms, reduce fire risk, and strengthen our emergency response. With your support, these efforts ensure every dog in our care remains safe, secure, and loved—no matter what challenges arise. 🐾

On behalf of the Board of Directors, thank you for your unwavering belief in our mission and for standing beside us through every challenge and every triumph. Your support makes this work possible. Together, we are building a lasting legacy of compassion, resilience, and second chances—one that will continue to change lives well into the future. 🐾

Our Vision For The Future



2020-2024

- Kennel Flooring Replacement
- New Riding Lawnmower
- Technology Refresh
- Install Second Playpen
- Acquire Commerical Washers & Dryers
- Exterior Powerwash & Painting

2025

- Start New Van Wrap for Pawsmobile
- Mold Remediation & Paint Interior of Kennel Building
- Refresh Parking Lot Gravel
- Improve Septic System Drainage
- Install Air Quality Control Systems in HVAC units
- Start New Sanctuary Shelter & Fire Safety Improvement Project

2026-2030

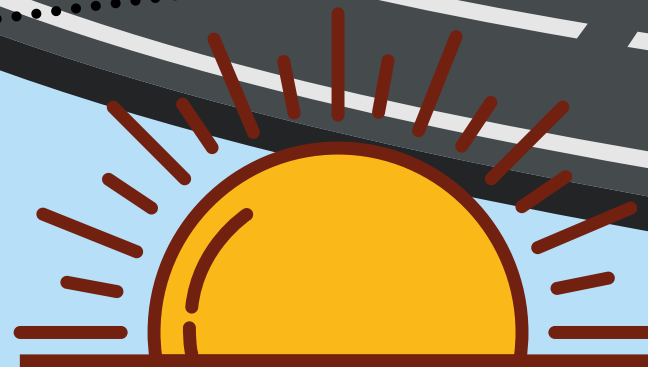
- Complete Van Wrap for Pawsmobile
- Complete New Sanctuary Shelter & Fire Safety Improvement Project
- Refresh Office Laptops
- Paint Interior of Office Space
- Install Quarantine Ceiling Fans or Mister Stations
- Replace HVAC Units
- Install New Water Heaters

2031-2035

- Install New Roof
- Purchase New Van
- Replace Well Pump House Equipment
- Install Retractable Awnings
- Install Solar Panel Field
- Build Additional Office Space

BEYOND

- New Septic System or County Hookup
- Quarantine Expansion
- Install Perimeter Fence





BUSINESS OVERVIEW

PAWS PLACE HISTORY

Since 1999, we have rescued, rehabilitated, and adopted dogs; a journey made possible by the dedication of our founder, Nancy Janovetz. What began as a retirement 'job' evolved into Janovetz's life's work when she rescued 50 dogs from the Southport Oak Island Animal Rescue, where she had once volunteered. She established the shelter on her 5-acre property in Boiling Springs, where we tirelessly operated day-to-day functions out of the barn, enduring everything from pouring rain to blistering sun. This dedication defined us for 13 years before we embarked on a new chapter by relocating to our current location in Winnabow. Since 2017, we have been operating in our new facility on 17 acres of land in Brunswick County. Features Include:

- 26 indoor/outdoor kennels
- 5 Quarantine Kennels
- 3 + acres of walkable space for our dogs
- 2 play pens for exercising dogs
- Facilities for our staff to include offices, laundry and a kitchen

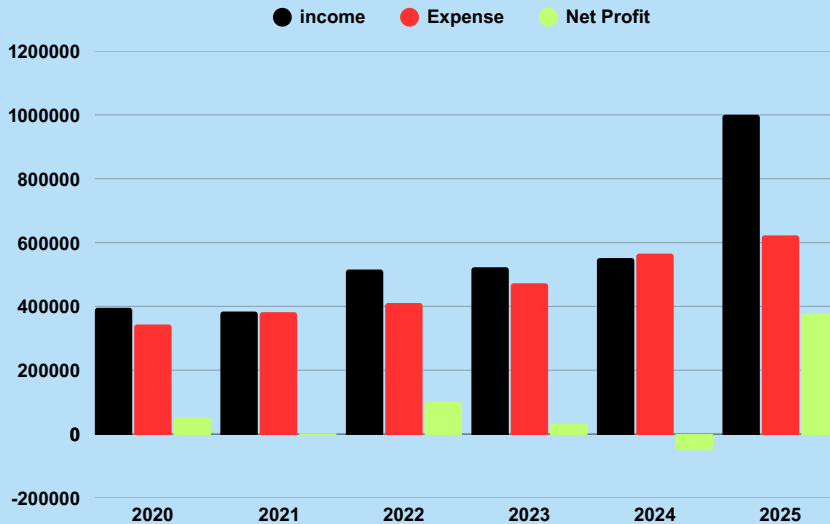
OUR MISSION

At Paws Place, our mission is life, and it's one life at a time. Our dogs have a quality of life here because we do prolong their lives. Every dog is fully vetted before it gets adopted and we do not shy away from bringing in dogs with medical needs or even puppies on the way! We test all of them for heartworms and parasites, and we address any medical conditions that need to be addressed prior to adoption. We make decisions regarding the care of our dogs just like we would our own family dog. Before going home, a Paws Place dog is brought up to date on vaccinations, spayed or neutered, microchipped, started on heartworm prevention, and shown tons of love. We do try to focus on screening what the needs of the family or the adopter are and try to match that with a dog that will be the best fit for them. Every adoption is done only in the best interest of the dog. It's not necessarily a first come first serve process. It's "will this dog fit into the needs of this family or this person" and will it be the best thing for that dog. There is no deadline for us when finding homes for our dogs, as we want each one to find a wonderful and loving home. We make a difference in more than just the lives of our dogs; we also make a difference in the lives of the families that adopt through us.

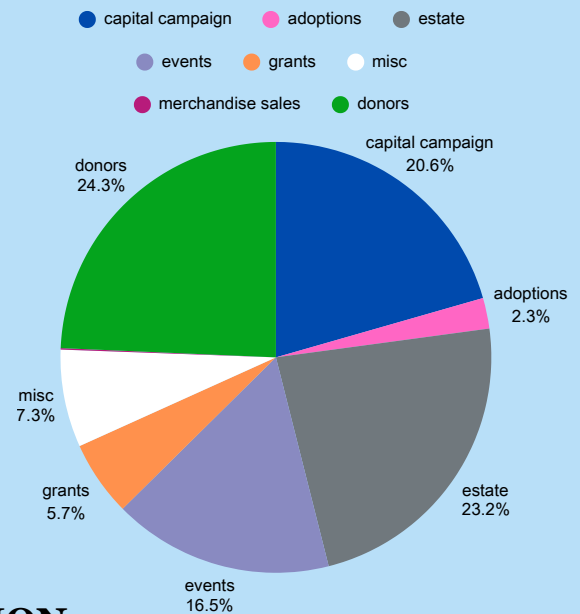


FINANCIAL HIGHLIGHTS

OVER THE YEARS



2025 INCOME DISTRIBUTION



REVENUE INFORMATION

In 2025, Paws Place Dog Rescue benefited from a strong and diversified mix of revenue sources that supported both daily operations and long-term planning. Individual donors remained the largest source of support, contributing \$253,591, while estate gifts totaled \$241,905—reflecting deep, lasting confidence in our mission. Our Capital Campaign raised \$214,420, helping us plan the critical facility and safety improvements needed. Our Signature events generated \$172,494, underscoring strong local engagement, and grants contributed \$58,946 in program support. Additional revenue included adoption fees of \$24,034, miscellaneous income of \$76,436, and merchandise sales of \$1,139. Together, these combined sources provided a stable and sustainable financial foundation to advance our lifesaving work and prepare for future growth.

Additionally, we continue to maintain our Platinum seal of transparency with Candid/Guiestar. In order to be awarded the platinum-level seal, Paws Place Dog Rescue provided detailed documentation related to our finances, goals, strategies, capabilities and progress. This significant accomplishment reflects our commitment to sharing open and honest information with the public about our goals and impact. Our donors can be assured that their contributions are used in the most effective and efficient manner.

Platinum
Transparency
2026

Candid.

For more than 26 years, Paws Place Dog Rescue has demonstrated sound financial stewardship, building a strong and resilient organization positioned to grow its impact through partnerships and innovative programs. While operating costs have increased due to inflation, expanded staffing, and necessary kennel repairs, these investments were essential to maintaining safe, high-quality care for the dogs we serve.

Even amid these challenges, we continue to meet and exceed nonprofit industry standards for financial responsibility. Our Board of Directors serves entirely in a volunteer capacity, and our strong reliance on volunteers and efficient operations allows the vast majority of every dollar to be directed toward our mission—ensuring donor support delivers meaningful, measurable impact for dogs in need. 🐾

PROFIT AND LOSS STATEMENT

Total Income	\$1,042,965
Cost of Good Sold	\$42,575
Gross Profit	\$1,000,390

OPERATING EXPENSES

Employee Payroll, Processing Fees & Payroll Taxes	\$279,952
Utilities	\$28,701
Pawsmobile	\$5,461
Veterinary Supplies/Services	\$27,619
Kennel Supplies	\$157,480
Insurance	\$18,316
Mortgage	\$11,176
Facility Repairs	\$36,277
Office Supplies	\$6,527
Marketing Fees	\$4,500
Licensing & Professional Fees	\$10,261
Sanctuary Shelter Project	\$35,360

NET

Total Operating Expenses	\$621,630
Operating Profit	\$378,760
Property Taxes	\$800
Net Income	\$377,960 *

* \$179,070 of this remains committed to Sanctuary Shelter Project

• • • • •

THANK YOU TO ALL OF OUR DONORS

The individuals, family foundations, and businesses who choose to donate to Paws Place through their financial support enable us to take risks and expand our impact. Your support is what keeps us operating. Because of donors, we can save more dogs, elevate success stories that would otherwise not be heard, and reach new adopters.

SPECIAL RECOGNITION OF OUR 2025 MAJOR DONORS

Susan Agnoff
Able Insurance Agency
Angela Carter
Wendy & Steve Arnold
BMW of Wilmington
Brunches
Bug-N-A-Rug
Burns Family Dentistry
Cherilyn & Kevin Bakley
Michael & Kathy Boyle
Miriam Brooks
Senator Ted Budd
Georganna Baker
Bob & Linda Boldt
Bryan-Trask Foundation
Rebecca Bryant
Buckeye Family Helper
Jeffrey & Melissa Butler
Cape Fear Commercial
Cape Fear Grooming
Cardinal Point East Group
Cayce Connell, Chili & Perennial Mortgage
Group
Chad Wouters CPA
Classic Landscapes
Claudene & Rock Clarke
Coastal Carrier Moving & Storage
Coastal Cosmetic Family Denistry
Colby Roofing
Coldwell Banker Sea Coast Advantage
Compass Pointe Golf Club
Corcoran HM Properties
Creekmore Realty/Retire 2NC
Angela Carter
Jay Chappell



Heather Craven
William E. Dean II Chitable Foundation
Deb's Party Details
Dishing With The DonoFANS Podcast
Sandra Darby
Linda Dessy Estate
Trevor Donovan
Bobbi & Dempsey Eason
ECVR
Edward Jones - Kyle Mitchell
Empire Graphics
Jon Evans
Allison Evans
Charlotte Fuchs
Family Dog Naturals
Firehouse Subs
First Citizens Bank
Fitness Forward Training Leland
FOX Wilmington (WSFX)
Mary Frances & Jeff Morketter
Shelia Fuchs
Vicki & Brian Ferrell
Landfall Foundation
Frank & Mary Christine Kostainschek
Amanda Fuller
Great American Family
Stephie Grocott
Joanne & Lee Gibbs
Tipton Gray
Sands Group
Hannah & Stephanie Holt
Healthy Solutions Carpet Care
Kelly Houston
Margaret Haar
Kim Heck

SPECIAL RECOGNITION OF OUR 2025 MAJOR DONORS (CONTINUED)

Chris Hegele
 Edward & Jo Henry
 Hoplite Irish Pub & Restaurant
 Jeff Hovis - Intracoastal Realty
 Kristine Howard
 Island Passage
 Katherine Irvine
 Johnson Brothers
 Patricia Jackson
 Michael Jacobs
 Jacquelyn Schumacher
 Keller Williams Real Estate
 Stephen & Steve Kane/Moore
 Alan Kerry
 Frank & Mary Christine Kostainschek
 Mary Kruszon
 Lanphear Builders
 Lanvale Animal Hospital
 Leland Magazine
 Leland Veterinary Hospital
 Lala & Elm Inc
 Ken Lang
 Marianne Lare
 Laura J Niles Foundation
 David & Kimberly Leach
 Linda Schoeni
 Rebecca & Sam Lord
 Loretta Schmitzer
 Christine Lozano
 Beth Martin
 Rick & Mary Mazur
 Crystal Moore
 Hugh MacRae
 Kathleen McLean
 MegaCorp
 Hugh MacRae
 Gerald & Joan Maggio
 Makasiar Trust
 Otto Marx
 Deborah McCoy



Kathleen McLean
 Jeanne Miesse
 Cheryl & Ethan Morlote
 nCino
 North State Bank
 Nothing Bundt Cakes
 North Carolina Community Foundation, Inc.
 Nuveen
 Amy Poore
 Grayson & Darlene Powell
 Pathfinder Wealth Consulting
 Pepsi
 Pierpan Dentistry Group
 Play It Again Sports
 PMG Carolinas
 Russ & Brenda Parrish
 Mark Pasquarette
 Paws for a Cause
 Amy & Matthew Penwell
 Eugene & Teresa Petruzzelli/Shrewsberry
 Amy Poore
 Kay and John Prentice
 Alicia Rudd RVT & Bill Salter
 Patti Riley & Jean Riley
 R.D. White & Sons
 M Cathrine Robbins
 Robert & Sherry Rosenberg
 Royal Plumbing of Wilmington
 Alan Rusher
 Barbara Squires
 Loretta Schmitzer
 Loulie & Matt Scharf
 Shark Bar
 Sun Coast Partners Commercial
 Cathy Scheidler
 Loretta Schmitzer
 Jacquelyn Schumacher
 Michelle Smith
 Mickey & Joyce Southerland
 Kristi & Tony Stephens

• • • • •

SPECIAL RECOGNITION OF OUR 2025 MAJOR DONORS (CONTINUED)

Mike & Becki Stevens
Mike & Maura Stonestreet
David & Joni Sturdy
Gail Swalm
Tama Tea
Taylor Made Transportation
The DonoFANS Club
The Photo District of NC
Tito's Handmade Vodka
The Cynthia & George Mitchell Foundation
Amanda Thomas
Janet & King Triplett
Unleashed of Wilmington
John & Lee VanOrmer
David & Angela Whitten
Eleanor Ord & Eric Webb
Inza Walston
Melissa Walker
Mike & Christina Whalen
Wendy Wilmot Properties
Inza Waston
Pat & Jamie Warren
Monica Watson
Murray Whitehill
Nancy Wilkes
Walter & Jean Wilkinson
Kim Williams
Wilmington Fur Ball
Susan Wilson
Xi Online
Michael Yanni
Young Again Foundation
George & Paulette Zimmerman



CONTACT

INFO@PAWSPLACE.ORG

HTTPS://PAWSPLACE.ORG

P.O. BOX 67

WINNABOW, NC 28479

910-845-7297